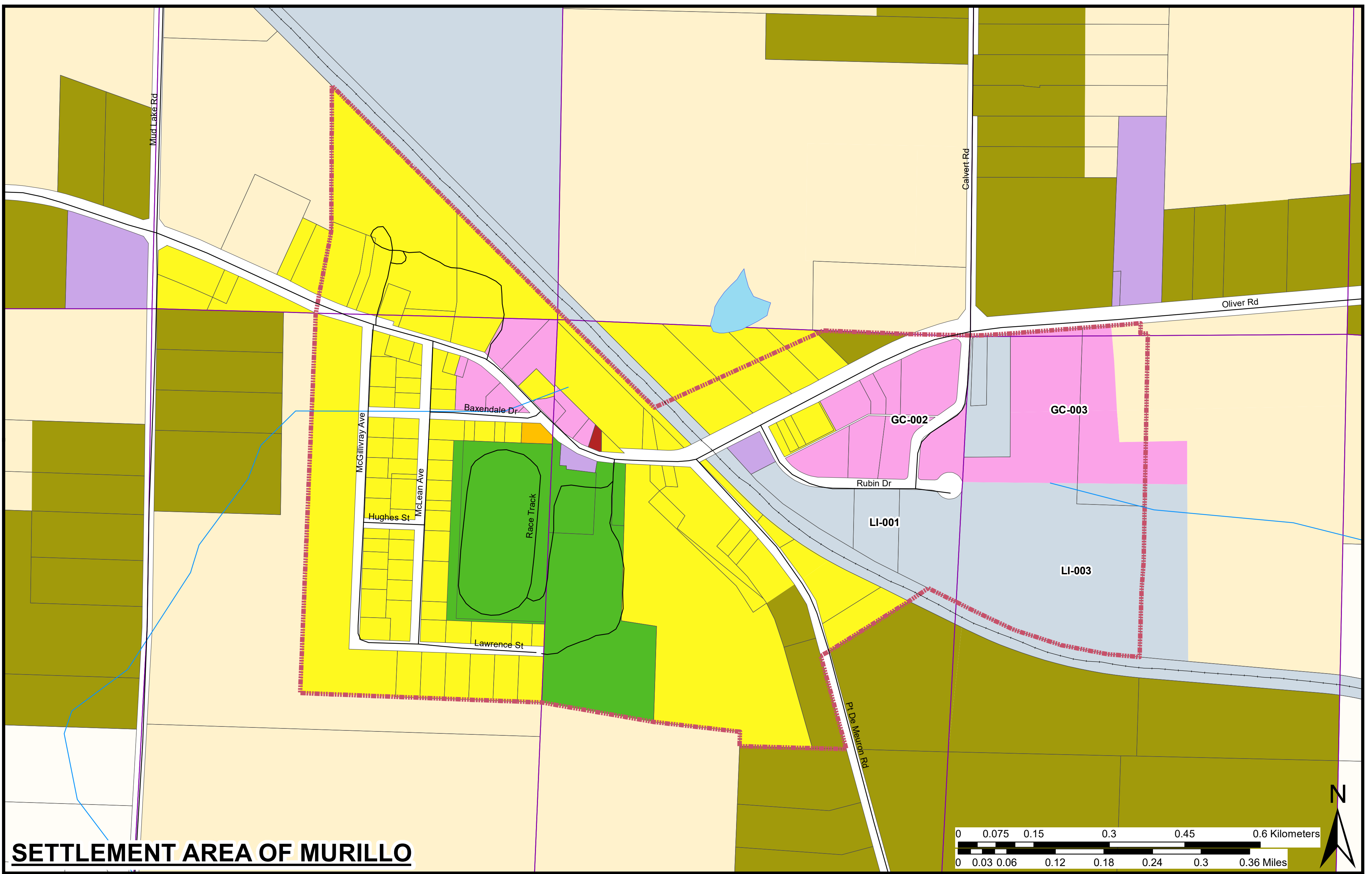


SETTLEMENT AREA OF KAKABEKA FALLS



SETTLEMENT AREA OF MURILLO

| Legend | | | |
|--------|--------------------------|--|-------------------------------|
| | Assessment Parcels | | Significant Agriculture (A) |
| | Municipal Boundary | | General Agriculture (AG) |
| | Railway | | Rural (RU) |
| | Roads | | Rural Residential (RR) |
| | Settlement Area Boundary | | Low Density Residential (R1) |
| | Township Lots | | High Density Residential (R2) |
| | Watercourse | | Multi-Unit Residential (RM) |
| | | | Mobile Home Residential (MHR) |
| | | | Institutional (I) |
| | | | General Commercial (GC) |
| | | | Neighbourhood Commercial (NC) |
| | | | Tourist Commercial (TC) |
| | | | Mixed Use Recreation (MR) |
| | | | Light Industrial (LI) |
| | | | Heavy Industrial (HI) |
| | | | Extractive Industrial (EI) |
| | | | Disposal Industrial (DI) |
| | | | Open Space (OS) |



**SCHEDULE C:
RURAL SETTLEMENT AREAS
OF KAKABEKA FALLS AND
MURILLO ZONING**

Datum: NAD 83
Projection: UTM Zone 16N
Date: 12 December 2018

This map is for illustrative purposes only.
Do not rely on it as being a precise indicator
of routes or features, nor as a guide to navigation.



This publication was produced by:
Quartek Group Inc.
89-91 St. Paul Street, Suite 100
St. Catharines, ON
L2R 3M3