



What can be recycled?



PAPER



Yes

- ✓ fine papers
- ✓ newspapers/flyers
- ✓ catalogues
- ✓ envelopes
- ✓ softcover books
- ✓ junk mail
- ✓ all writing paper

No

- ✗ Christmas wrap
- ✗ hardcover books
- ✗ carbon paper
- ✗ blueprints

STEEL CANS



Yes

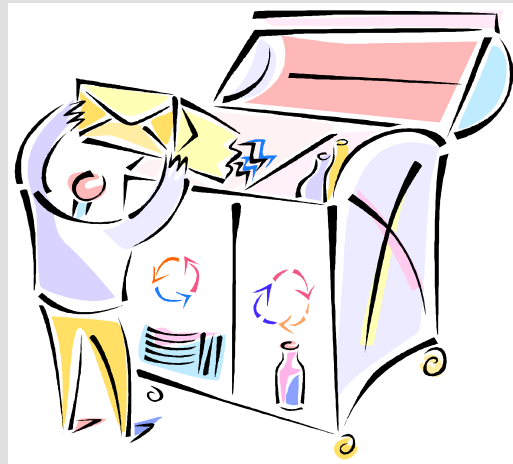
- ✓ clean, uncrushed food cans

No

- ✗ propane tanks
- ✗ batteries
- ✗ appliances
- ✗ bicycles
- ✗ ballasts
- ✗ paint cans



Landfill Sites Recycling Depots



P.O. Box 10, 4569 Oliver Road
Murillo, ON P0T 2G0
Tel: (807) 935-2613
Website: www.oliverpaipoonge.ca



What can be recycled?



PLASTIC BOTTLES



Yes*

- ✓ #1 plastic PET—pop bottles, water bottles
- ✓ #2 plastic PET—household cleaner bottles e.g. shampoo, dish soap

**check bottom of bottle*

MILK CARTONS/TETRA PAKS



Yes

- ✓ milk cartons
- ✓ juice boxes
- ✓ tetra or gable top containers

No

- ✗ #3—7 plastics
- ✗ shopping bags
- ✗ plastic wrap
- ✗ baggies
- ✗ bubble wrap
- ✗ Styrofoam
- ✗ plastic tubs & lids
- ✗ containers with hazardous waste e.g. motor oil



What can be recycled?



POP CANS



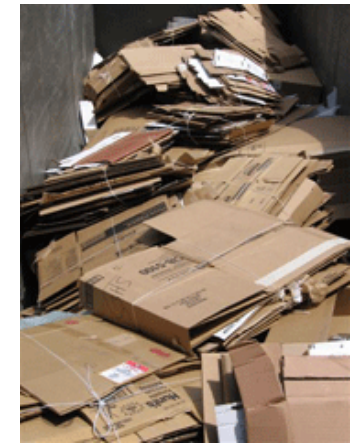
Yes

- ✓ empty, uncrushed beverage cans

No

- ✗ items other than beverage containers

CARDBOARD



Yes*

- ✓ corrugated cardboard
- ✓ boxboard i.e. cereal boxes
- ✓ file folders
- ✓ business cards
- ✓ clean pizza boxes

** please flatten*

No

- ✗ Styrofoam or other packaging
- ✗ waxed soap/detergent or produce boxes
- ✗ cardboard with Styrofoam or plastic attached

Rules and Regulations

- All users must be residents of Oliver Paipoonge
- Residents must have a landfill sticker visible in window of their vehicle. Landfill stickers can be obtained from the Municipal Office.
- Prohibited items:
 - × Liquid wastes, e.g. waste oils, flammables, paints, sewage
 - × Animal carcasses
- Burning of waste prohibited
- No smoking
- No scavenging
- Obey posted speed limits
- Residents must deposit waste and recyclables in designated areas:
 - ✓ Household garbage
 - ✓ Recycling
 - ✓ Metal
 - ✓ **Local** building materials, construction and demolition debris
 - ✓ Brush and old lumber for burn pile
 - ✓ Used tires

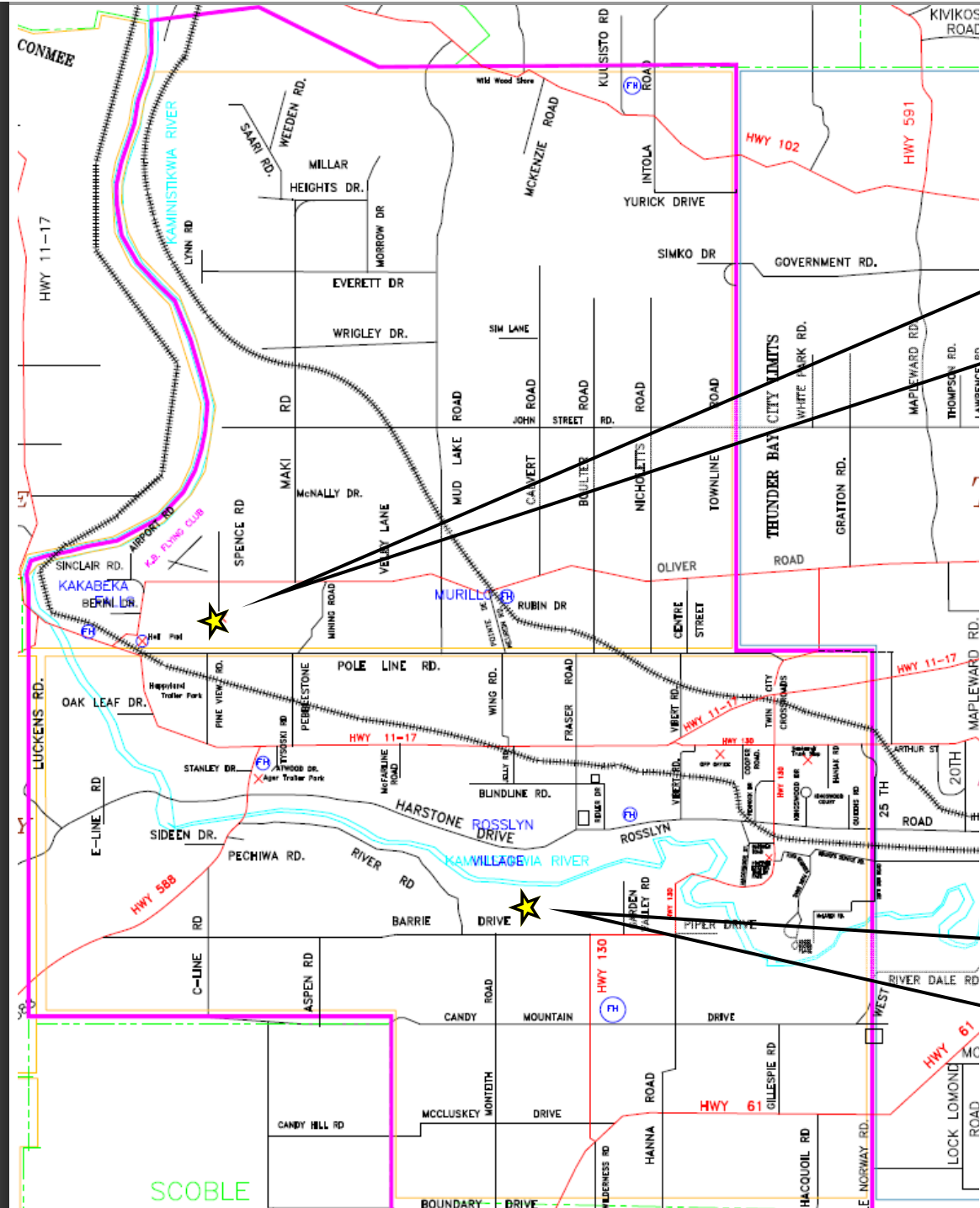
Disposal of refrigerators, freezers, air conditioners and dehumidifiers:

Residents must obtain a tag from the Municipal Office for a fee of **\$45** per item before it can be brought to the Landfill Site.

Tipping Fees

Size of Truckload	Non-Combustible Residential Waste (per load)
Single axel dump (4500 kg+)	\$30
Tandem	\$50
Tri-axel	\$70
Larger than tri-axel	\$90

Oliver Paipoonge Landfill Sites & Recycling Depots



North Landfill Site & Recycling Depot

Spence Road

Summer Hours (April 1—September 30)
 Tuesday—12:00 noon to 8:00 pm
 Saturday—9:00 am to 5:00 pm

Winter Hours (October 1—March 31)
 Tuesday—12:00 noon to 5:00 pm
 Saturday—9:00 am to 5:00 pm

South Landfill Site & Recycling Depot

Barrie Drive

Summer Hours (April 1—September 30)
 Wednesday —12:00 noon to 8:00 pm
 Saturday—9:00 am to 5:00 pm

Winter Hours (October 1—March 31)
 Wednesday —12:00 noon to 5:00 pm
 Saturday—9:00 am to 5:00 pm